

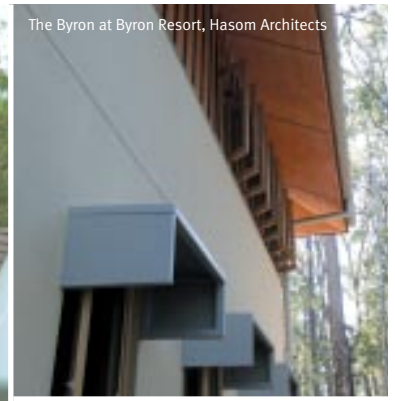
SHADOWC|L|A|D<sup>®</sup>

buildgreener





Cape Schanck House, Paul Morgan Architects



The Byron at Byron Resort, Hasom Architects

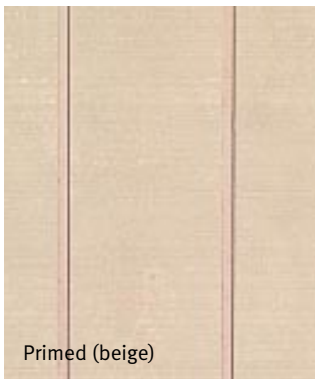


Aberdeen Hotel, Millar Watson

## Shadowclad – a natural, stylish, versatile cladding solution from Carter Holt Harvey.

Shadowclad® is fast becoming the cladding of choice for an environmentally friendly, stylish finish. Many of Australia's prominent designers have found inspiration in the textured or grooved appearance for both outdoor and indoor applications. Whether your project is residential or commercial, Shadowclad offers a cost effective alternative to standard wall cladding.

Grooved



Primed (beige)



Natural

Textured



Primed (beige)



Natural

### Benefits

- Cost effective building solution
- Safe, lightweight and easy to handle
- No special tools required for installation
- Primed surface saves on labour and paint costs
- Dual cladding and bracing properties
- Good thermal properties
- Can be used on curved applications
- H3 treated against fungal and termite attack
- Custom-made aluminium flashing systems for fixing
- Complies with Building Code of Australia 2008
- Forest Stewardship Council (FSC) Certified products are available on request
- Professional technical support available



The mark of responsible forestry

SCS COC 001316

[www.fsc.org](http://www.fsc.org)

© 1996 Forest Stewardship Council





1



2



3



4



5



6



7



8



9



10



11



12



13



14

1 Sunshine Coast University Library  
Architects: Lawrence Nield + John Mainwaring  
Product: Shadowclad Texture

2 Falconer's Retreat  
Design: ALIGNworks  
Product: Shadowclad Texture

3 The Hastings  
Architect: Gabriel Poole  
Product: Shadowclad Groove

4/7 Omaha Beach House  
Design: ALIGNworks  
Product: Shadowclad Texture

5 Axis Home  
Design: ALIGNworks  
Product: Shadowclad Texture

6 National Environment Centre  
Architects: Lindsay + Kerry Clare  
Product: Shadowclad Texture

8/9 Cape Schanck House  
Architects: Paul Morgan Architects  
Product: Shadowclad Texture

10 Inverleigh Primary School  
Architects: Cowland North Architects  
Product: Shadowclad Texture

11 Jordan Residence  
Architects: Greg Jones & Partners  
Product: Shadowclad Groove

12 Canal House  
Architects: JMA Architects  
Product: Shadowclad Texture

13 Panton Hill Residence  
Building Design: Solar Earth Design  
Product: Shadowclad Texture

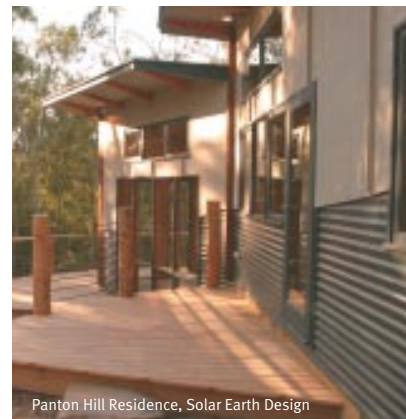
14 Mod House Range  
Design + Fabrication: Prebuilt  
Product: Shadowclad Texture

## Description & Purpose

Shadowclad is a 12 mm thick wall cladding available in sheets of coverage 1200 mm width and lengths of 2440, 2745 or 3050 mm and a shiplap weathergroove joint on the long edge of each sheet. The surface has a rough band sawn surface and is available with either vertical grooves at 150 mm centres or with a textured finish.

Shadowclad is available in a proprietary preprimed, powder coated finish for painting or in an unprimed natural surface for staining. The aesthetic properties of Shadowclad makes it suitable for both exterior and even interior applications.

Shadowclad is treated to H3 with a clear, non corrosive Light Organic Solvent Preservative (LOSP). This treatment protects the surface against rot and insect infestation. It can also be used for structural bracing when fixed directly to framing†. Shadowclad is manufactured from legally harvested plantation grown Radiata pine (FSC).



Panton Hill Residence, Solar Earth Design

## Product Data

| Description              | Textured                            | Grooved                              |
|--------------------------|-------------------------------------|--------------------------------------|
| Finish                   | Natural or Primed                   | Natural or Primed                    |
| Sheet Length             | 2440, 2745 and 3050 <sup>‡</sup> mm | 2440, 2745 and 3050 mm               |
| Width                    | 1216                                | 1216                                 |
| Length/Width Tolerance   | +/- 1 mm                            | +/- 1 mm                             |
| Weight Kg/m <sup>2</sup> | 7                                   | 7                                    |
| Grooves                  | N/A                                 | 9 mm wide, 5 mm deep, 150 mm centres |
| Edge Profile             | Shiplap with Weathergrooves         | Shiplap with Weathergrooves          |
| Treatment                | H3 (AZOLE) LOSP Clear <sup>^</sup>  | H3 (AZOLE) LOSP Clear <sup>^</sup>   |
| R-Value                  | 2 <sup>§</sup>                      | 2 <sup>§</sup>                       |

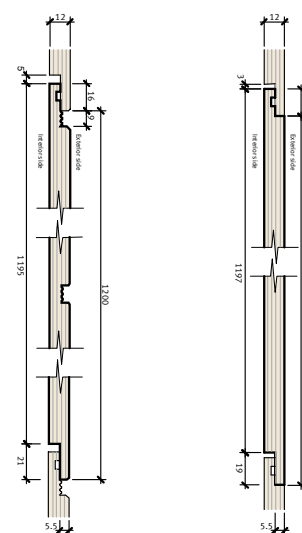
† Bracing capacity depends on the wind zones and nail patterns.

‡ Available in primed only.

<sup>^</sup> Untreated product is also available made to order.

§ Total cavity value assumes 10 mm plasterboard lining, bulk insulation R 1.5 m, cavity width, reflective foil lining.

## Profiles



Shadowclad Grooved

Shadowclad Textured

## Shadowclad Flashings

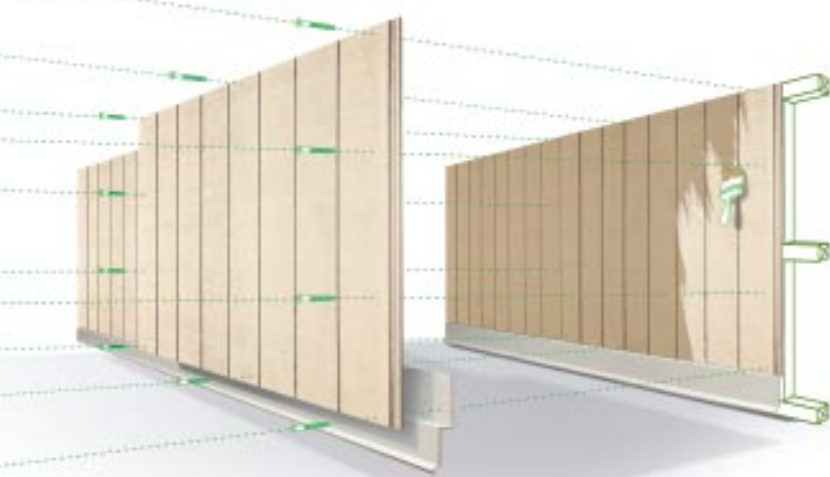
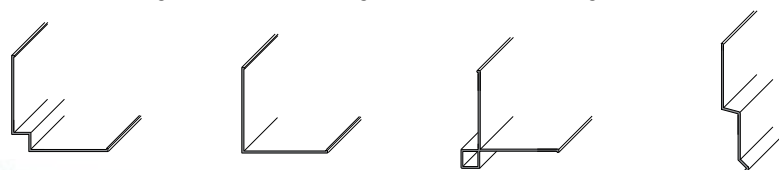
An extensive range of custom-made natural anodized aluminium flashings are also available for corners and horizontal joints. The flashings are profiled to ensure weather seal protection and compliment the look and feel of Shadowclad. Shadowclad accessories include 3.6 m Horizontal 'Z', 2440 mm, 2745 mm and 3050 mm Internal 90° angle and Internal 'W' 90° angle and an External 90° box angle (15 x 15 mm, 25 x 25 mm). For professional technical advice contact a qualified Carter Holt Harvey representative or visit [www.chhwoodproducts.com.au/shadowclad](http://www.chhwoodproducts.com.au/shadowclad) and download a copy of the Installation Guide.

Internal 'W' 90° Angle

Internal 90° Angle

External Box Angle

Horizontal 'Z' Flashing



## Installation Tips

- Seal all cut edges with a preservative such as PROTIM® LOSP. Laps and edges should be sealed with primer
- Allow 2-3 mm between the vertical sheet joints and corner joints
- Allow a gap of 5 mm between the bottom of the sheet and flashings for frame movement and drainage
- Fasten all edges at 150 mm centres and 7 mm from sheet edges
- Fasten to intermediate studs and nogs at 300 mm centres
- Do not nail in the bottom of the groove of the grooved panels



## Taubmans Sunproof Max Acrylic Paint System



A 10-year warranty will apply when prepared and painted in accordance with Taubmans paint specifications. For a complete colour palette contact Taubmans 131 686 or visit [www.specifi.com.au](http://www.specifi.com.au)

Note: Colours shown are as close as possible to actual paint colours. Due to limitations of the printing process, photographic and printed images may not represent the true colour.

### Preparation

Prior to painting, ensure that the surface is clean, dry and free from dust, oil and grease. We recommend painting within 3 months of installation or external exposure. Sheets should be aired 5 days prior to painting to dissipate LOSP. Avoid working in direct sun. Dark paint colours can cause the cladding surface to distort in very hot, direct sunlight.

### Primed Shadowclad

Shadowclad is available in a proprietary preprimed, powder coated finish for painting or in an unprimed natural surface for staining.

Unlike liquid primers, the powder coating process prepares the surface with a continuous film across all edges, over the shiplap and enrobes the surface fibres.

Primed Shadowclad improves top coat application rates, saving you time and money. Top coat application rates are 14 m<sup>2</sup> per litre.

For best results when painting on primed Shadowclad, use high quality paints such as Taubmans Sunproof Max Acrylic Low Sheen (D134) with a brush or roller. Wood-mans Cladcoat film forming stains also provide outstanding UV resistance and protection against cracking and peeling.

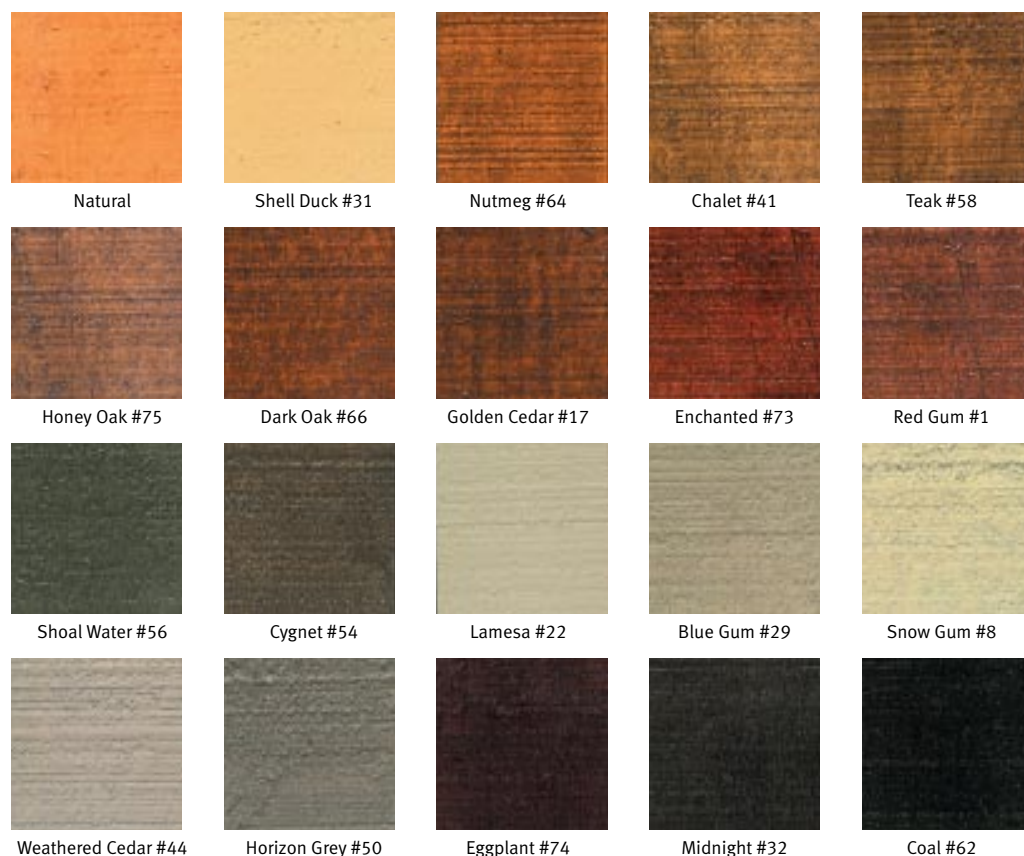
### Natural Shadowclad

Natural Shadowclad can be primed and top coated with all good quality coatings to give a semi transparent finish. On Natural Shadowclad we recommend 1 coat of Taubmans® 3 in 1 Primer Sealer Undercoat. Top coat with 2 coats of Taubmans All Weather or Sunproof exterior acrylic for a long lasting finish with a 10 year warranty. See pack for details.

In high exposure areas, we recommend 1 coat of Wood-man's Prime All UV transparent primer containing a fungicide for protection against mould for up to 12 weeks prior to top coating with additional UV protection. Top coat with Wood-man's Cladcoat semi-transparent acrylic system providing protection against cracking and peeling.

Shadowclad can also be stained with Cabot's or Intergrain exterior stains and Dulux Acrylic Primer Undercoat and top coat with Dulux Weathershield X10.

## Wood-man's Cladcoat Semi-transparent Coating System



For a complete colour palette contact Bostik 1300 723 522 or visit [www.wood-mans.com.au](http://www.wood-mans.com.au)

## Safe handling

We recommend that respirators, safety gloves and loose comfortable clothing are worn when sawing and drilling of all cladding materials to protect against wood dust. Material Safety Data Sheets (MSDS) are available on request.

## Product quality

Engineered Wood Products Association of Australasia  
'Product Certified' for peace of mind.



## Wood, naturally.

Wood is one of the world's most environmentally friendly building products. It is natural, renewable, biodegradable and overall sustainable.

Australia's leading timber and engineered wood products supplier, Carter Holt Harvey, is committed to conserving and protecting the Australian natural environment. Carter Holt Harvey adheres to:

- Certified environmental standards
- Reducing water usage
- Using resources efficiently

Carter Holt Harvey ensures that all its wood is legally sourced from sustainably managed, plantation pine forests, by way of third party audit and 'chain of custody' requirements and does not source wood from genetically modified or 'old growth' sources.

Wood products require less energy to produce than almost any other building product. Much of the energy used in the processing of timber is derived from the combustion of process residues as biofuel, making wood essentially greenhouse gas neutral when compared with fossil fuels.

Timber is the only building product that is a natural carbon store and plays a major role in combating climate change.

Choosing products by Carter Holt Harvey, which are sourced from sustainably managed plantation forests, stimulates the expansion of Australia's plantation forest estate, representing a permanent long-term decrease in Australia's greenhouse gas emissions.

Carter Holt Harvey – using wood, naturally for a responsible and sustainable business. Visit [www.chhwoodproducts.com.au](http://www.chhwoodproducts.com.au) for further information on our environmental initiatives.



The mark of responsible forestry

SCS COC 001316

[www.fsc.org](http://www.fsc.org)

© 1996 Forest Stewardship Council



The Byron at Byron Resort, Hasom Architects



Jenson, Carlisle Homes



Mod House, Prebuilt

For more details freecall 1800 338 463 or visit [www.chhwoodproducts.com.au/shadowclad](http://www.chhwoodproducts.com.au/shadowclad)

Available from:

